

LYAR Polyclonal Antibody

Catalog No :	YT2606
Reactivity :	Human;Rat;Mouse;
Applications :	WB;IHC;IF;ELISA
Target :	LYAR
Gene Name :	LYAR
Protein Name :	Cell growth-regulating nucleolar protein
Human Gene Id :	55646
Human Swiss Prot No :	Q9NX58
Mouse Swiss Prot No :	Q08288
Immunogen :	The antiserum was produced against synthesized peptide derived from human LYAR. AA range:241-290
Specificity :	LYAR Polyclonal Antibody detects endogenous levels of LYAR protein.
Formulation :	Liquid in PBS containing 50% glycerol, 0.5% BSA and 0.02% sodium azide.
Source :	Polyclonal, Rabbit,IgG
Dilution :	WB 1:500 - 1:2000. IHC 1:100 - 1:300. ELISA: 1:10000.. IF 1:50-200
Purification :	The antibody was affinity-purified from rabbit antiserum by affinity-chromatography using epitope-specific immunogen.
Concentration :	1 mg/ml
Storage Stability :	-15°C to -25°C/1 year(Do not lower than -25°C)
Observed Band :	44kD

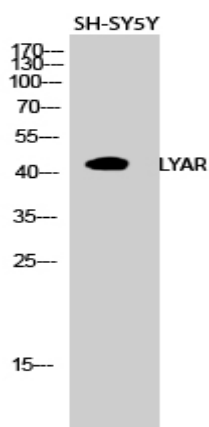
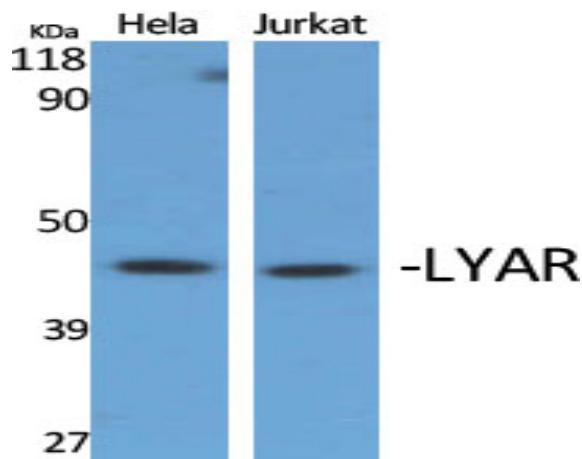
Background : similarity:Contains 2 C2HC-type zinc fingers.,

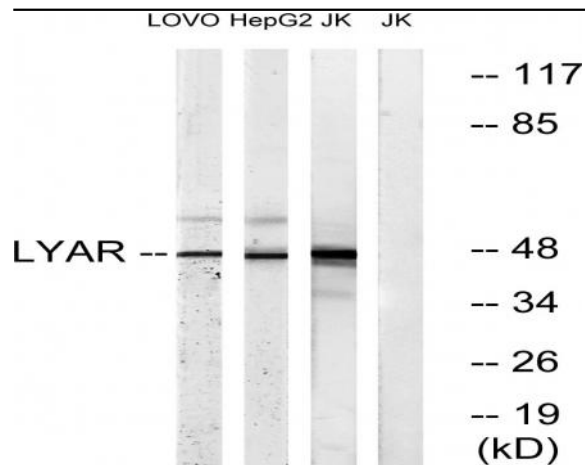
Function : similarity:Contains 2 C2HC-type zinc fingers.,

Subcellular Location : Nucleus . Nucleus, nucleolus . Cytoplasm . Cell projection, cilium, photoreceptor outer segment . Component of pre-ribosomal particles, including pre-40S, pre-60S and pre-90S (PubMed:24495227). Associated with cytoplasmic ribosomes, but not polysomes, as a component of the 60S subunit (PubMed:24990247). In the retina, predominantly expressed in photoreceptor outer segments (By similarity). In the nucleolus, colocalizes with nucleolin/NCL, therefore may reside in the dense fibrillar component (DFC) (By similarity). .

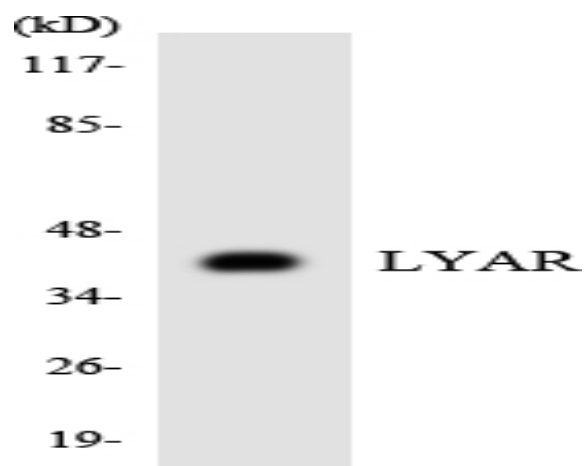
Expression : Predominantly expressed in testis.

Products Images

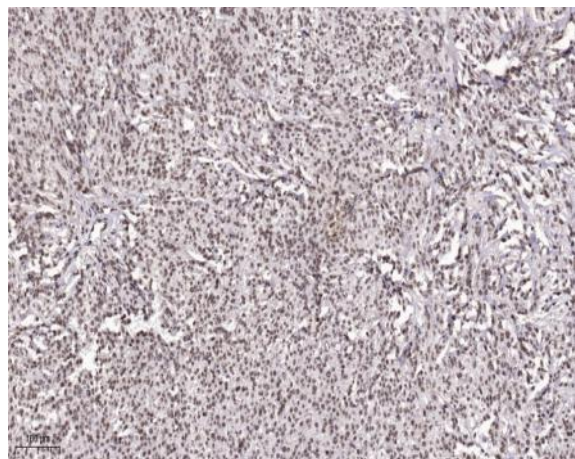




Western blot analysis of lysates from Jurkat, HepG2, and LOVO cells, using LYAR Antibody. The lane on the right is blocked with the synthesized peptide.



Western blot analysis of the lysates from K562 cells using LYAR antibody.



Immunohistochemical analysis of paraffin-embedded human Small intestinal stromal tumor. 1, Tris-EDTA, pH9.0 was used for antigen retrieval. 2 Antibody was diluted at 1:200 (4° overnight). 3, Secondary antibody was diluted at 1:200 (room temperature, 45min).