

SWAP Polyclonal Antibody

Catalog No :	YT4475
Reactivity :	Human;Rat;Mouse;
Applications :	WB;IHC
Target :	SWAP
Gene Name :	SFSWAP
Protein Name :	Splicing factor suppressor of white-apricot homolog
Human Gene Id :	6433
Human Swiss Prot No :	Q12872
Mouse Swiss Prot No :	Q3USH5
Immunogen :	The antiserum was produced against synthesized peptide derived from human SFRS8. AA range:201-250
Specificity :	SWAP Polyclonal Antibody detects endogenous levels of SWAP protein.
Formulation :	Liquid in PBS containing 50% glycerol, 0.5% BSA and 0.02% sodium azide.
Source :	Polyclonal, Rabbit,IgG
Dilution :	WB 1:500-2000;IHC 1:50-300
Purification :	The antibody was affinity-purified from rabbit antiserum by affinity-chromatography using epitope-specific immunogen.
Concentration :	1 mg/ml
Storage Stability :	-15°C to -25°C/1 year(Do not lower than -25°C)
Observed Band :	105kD

Background :

This gene encodes a human homolog of Drosophila splicing regulatory protein. This gene autoregulates its expression by control of splicing of its first two introns. In addition, it also regulates the splicing of fibronectin and CD45 genes. Two transcript variants encoding different isoforms have been identified. [provided by RefSeq, May 2012],

Function :

function:May function as an alternative splicing regulator. Regulate its own expression at the level of RNA processing. Also regulates the splicing of fibronectin and CD45 genes. May act, at least in part, by interaction with other R/S-containing splicing factors.,PTM:Phosphorylated upon DNA damage, probably by ATM or ATR.,similarity:Contains 2 SURP motif repeats.,

Subcellular Location :

Nucleus .

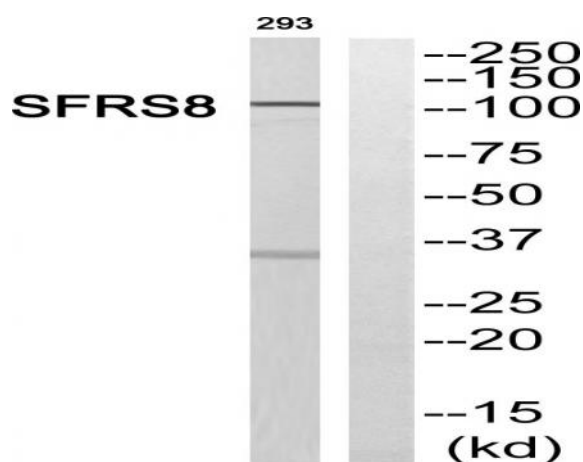
Expression :

Brain,Epithelium,Eye,Placenta,Skin,

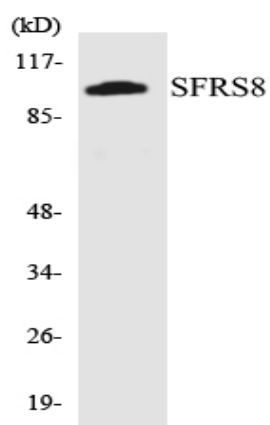
Products Images



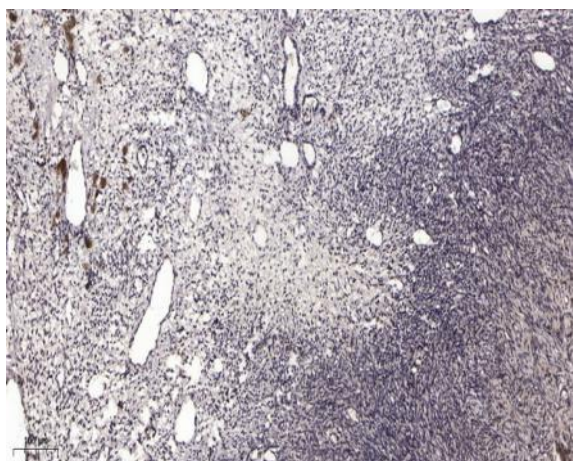
Western Blot analysis of various cells using SWAP Polyclonal Antibody cells nucleus extracted by Minute TM Cytoplasmic and Nuclear Fractionation kit (SC-003, Inventbiotech, MN, USA).



Western blot analysis of SFRS8 Antibody. The lane on the right is blocked with the SFRS8 peptide.



Western blot analysis of the lysates from 293 cells using SFRS8 antibody.



Immunohistochemical analysis of paraffin-embedded human oophoroma. 1, Antibody was diluted at 1:200(4° overnight). 2, Tris-EDTA,pH9.0 was used for antigen retrieval. 3,Secondary antibody was diluted at 1:200(room temperature, 45min).