

## HFE Monoclonal Antibody

<b>Catalog No :</b>	YM0330
<b>Reactivity :</b>	Human
<b>Applications :</b>	WB;IF;ELISA
<b>Target :</b>	HFE
<b>Gene Name :</b>	HFE
<b>Protein Name :</b>	Hereditary hemochromatosis protein
<b>Human Gene Id :</b>	3077
<b>Human Swiss Prot No :</b>	Q30201
<b>Mouse Swiss Prot No :</b>	P70387
<b>Immunogen :</b>	Purified recombinant fragment of human HFE expressed in E. Coli.
<b>Specificity :</b>	HFE Monoclonal Antibody detects endogenous levels of HFE protein.
<b>Formulation :</b>	Liquid in PBS containing 50% glycerol, 0.5% BSA and 0.02% sodium azide.
<b>Source :</b>	Monoclonal, Mouse
<b>Dilution :</b>	WB 1:500 - 1:2000. IF 1:200 - 1:1000. ELISA: 1:10000. Not yet tested in other applications.
<b>Purification :</b>	Affinity purification
<b>Storage Stability :</b>	-15°C to -25°C/1 year(Do not lower than -25°C)
<b>Molecularweight :</b>	40kD
<b>P References :</b>	1. Respir Med. 2009 Dec;103(12):1866-70. 2. Clin J Am Soc Nephrol. 2009 Aug;4(8):1331-7.

## Background :

The protein encoded by this gene is a membrane protein that is similar to MHC class I-type proteins and associates with beta2-microglobulin (beta2M). It is thought that this protein functions to regulate iron absorption by regulating the interaction of the transferrin receptor with transferrin. The iron storage disorder, hereditary haemochromatosis, is a recessive genetic disorder that results from defects in this gene. At least nine alternatively spliced variants have been described for this gene. Additional variants have been found but their full-length nature has not been determined. [provided by RefSeq, Jul 2008],

## Function :

alternative products:Additional isoforms seem to exist,disease:Defects in HFE are a cause of hereditary hemochromatosis (HH) [MIM:235200]. HH is an autosomal recessive inborn disorder of iron metabolism. It is the most common recessive disease in Caucasians. HH is characterized by abnormal intestinal iron absorption and progressive increase of total body iron, which results in midlife in clinical complications including cirrhosis, cardiopathy, diabetes, endocrine dysfunctions, arthropathy, and susceptibility to liver cancer. Since the disease complications can be effectively prevented by regular phlebotomies, early diagnosis is most important to provide a normal life expectancy to the affected subjects.,disease:Defects in HFE are a cause of porphyria variegata (PV) [MIM:176200]. Porphyrrias are inherited defects in the biosynthesis of heme, resulting in the accumulation and increased excretion of heme precursors.

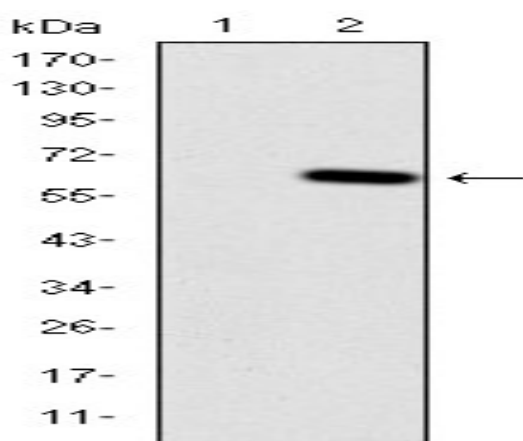
## Subcellular Location :

Cell membrane ; Single-pass type I membrane protein .

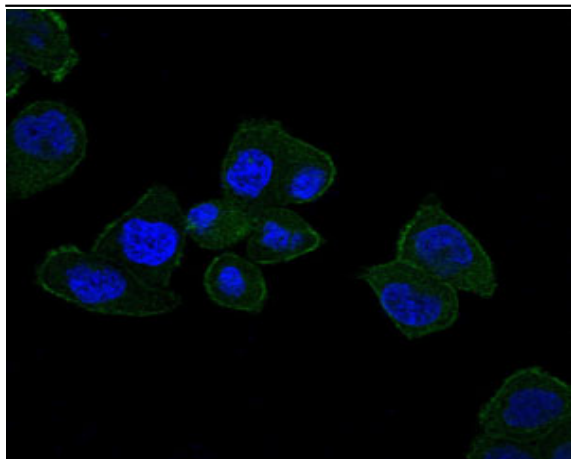
## Expression :

Expressed in all tissues tested except brain.

## Products Images



Western Blot analysis using HFE Monoclonal Antibody against HEK293 (1) and HFE-hlgGfC transfected HEK293 (2) cell lysate.



Immunofluorescence analysis of HepG2 cells using HFE Monoclonal Antibody (green). Blue: DRAQ5 fluorescent DNA dye.

