

## TLR5 Rabbit pAb

CatalogNo: YN0038

Orthogonal Validated 

### Key Features

**Host Species**

- Rabbit

**Reactivity**

- Human, Mouse

**Applications**

- WB, ELISA

**MW**

- 94kD (Observed)

**Isotype**

- IgG

### Recommended Dilution Ratios

**WB 1:500-2000****ELISA 1:5000-20000**

### Storage

**Storage\*** -15°C to -25°C/1 year (Do not lower than -25°C)**Formulation** Liquid in PBS containing 50% glycerol, 0.5% BSA and 0.02% sodium azide.

### Basic Information

**Clonality** Polyclonal

### Immunogen Information

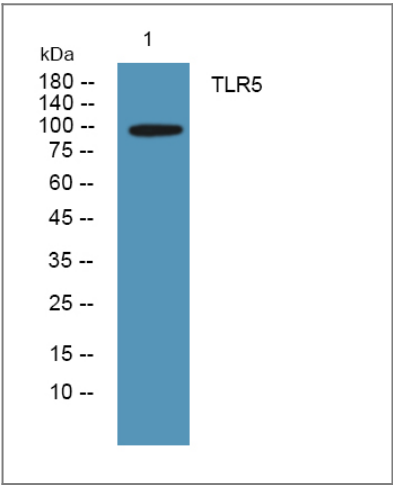
**Immunogen** Synthesized peptide derived from human protein . at AA range: 730-810**Specificity** TLR5 Polyclonal Antibody detects endogenous levels of protein.

### Target Information

**Gene name** TLR5 TIL3

<b>Protein Name</b>	Toll-like receptor 5 (Toll/interleukin-1 receptor-like protein 3)		
	<b>Organism</b>	<b>Gene ID</b>	<b>UniProt ID</b>
	Human	<a href="#">7100;</a>	<a href="#">O60602;</a>
	Mouse		<a href="#">Q9JLF7;</a>
<b>Cellular Localization</b>	Cell membrane ; Single-pass type I membrane protein .		
<b>Tissue specificity</b>	Highly expressed on the basolateral surface of intestinal epithelia (PubMed:11489966). Expressed also in other cells such as lung epithelial cells (PubMed:11489966, PubMed:18490781).		
<b>Function</b>	<p>Disease:Genetic variation in TLR5 is associated with resistance to systemic lupus erythematosus type 1 (SLEB1) [MIM:601744]. Systemic lupus erythematosus (SLE) is a chronic autoimmune disease with a complex genetic basis. SLE is an inflammatory, and often febrile multisystemic disorder of connective tissue characterized principally by involvement of the skin, joints, kidneys, and serosal membranes. It is thought to represent a failure of the regulatory mechanisms of the autoimmune system.,Function:Participates in the innate immune response to microbial agents. Mediates detection of bacterial flagellins. Acts via MYD88 and TRAF6, leading to NF-kappa-B activation, cytokine secretion and the inflammatory response.,polymorphism:Individuals with a common stop codon polymorphism in position 392 are unable to mediate flagellin signaling. This polymorphism acts in a dominant fashion and is associated with susceptibility to pneumonia caused by Legionella pneumophila [MIM:608556]. It also provides protection against systemic lupus erythematosus.,similarity:Belongs to the Toll-like receptor family.,similarity:Contains 1 TIR domain.,similarity:Contains 15 LRR (leucine-rich) repeats.,subunit:Binds MYD88 via their respective TIR domains.,tissue specificity:Highly expressed in ovary and in peripheral blood leukocytes, especially in monocytes, less in CD11c+ immature dendritic cells. Also detected in prostate and testis.,</p>		

| Validation Data



Western blot analysis of lysates from Jurkat cells, primary antibody was diluted at 1:1000, 4°over night

| Contact information

Orders: order.cn@immunoway.com  
Support: support.cn@immunoway.com  
Telephone: 400-8787-807(China)  
Website: <http://www.immunoway.com.cn>  
Address: 2200 Ringwood Ave San Jose, CA 95131 USA



Please scan the QR code  
to access additional  
product information:  
**TLR5 Rabbit pAb**

---

For Research Use Only. Not for Use in Diagnostic Procedures.

[Antibody](#) | [ELISA Kits](#) | [Protein](#) | [Reagents](#)