

CAH11 Rabbit pAb

CatalogNo: YN0552

Key Features

Host Species

- Rabbit

Reactivity

- Human, Mouse

Applications

- WB, ELISA

MW

- 36kD (Observed)

Isotype

- IgG

Recommended Dilution Ratios

WB 1:500-2000

ELISA 1:5000-20000

Storage

Storage*

-15°C to -25°C/1 year (Do not lower than -25°C)

Formulation

Liquid in PBS containing 50% glycerol, 0.5% BSA and 0.02% sodium azide.

Basic Information

Clonality

Polyclonal

Immunogen Information

Immunogen

Synthesized peptide derived from part region of human protein

Specificity

CAH11 Polyclonal Antibody detects endogenous levels of protein.

Target Information

Gene name

CA11 CARP2 UNQ211/PRO237

Protein Name Carbonic anhydrase-related protein 11 (CA-RP XI) (CA-XI) (CARP XI) (Carbonic anhydrase-related protein 2) (CA-RP II) (CARP-2)

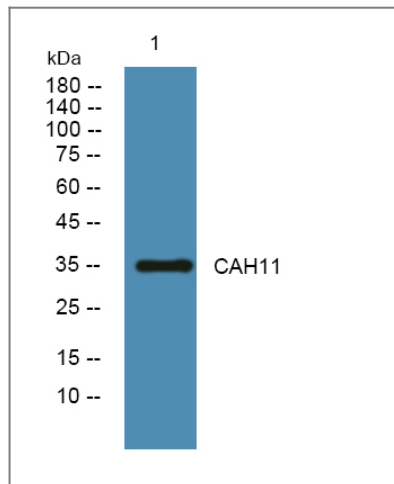
| Organism | Gene ID | UniProt ID |
|----------|-----------------------|--------------------------|
| Human | 770 ; | O75493 ; |
| Mouse | | O70354 ; |

Cellular Localization Secreted .

Tissue specificity Expressed abundantly in the brain with moderate expression also present in spinal cord and thyroid.

Function Function:Does not have a catalytic activity.,similarity:Belongs to the alpha-carbonic anhydrase family.,tissue specificity:Expressed abundantly in the brain with moderate expression also present in spinal cord and thyroid.,

Validation Data



Western blot analysis of lysates from PC12 cells, primary antibody was diluted at 1:1000, 4°over night

Contact information

Orders: order.cn@immunoway.com
Support: support.cn@immunoway.com
Telephone: 400-8787-807(China)
Website: <http://www.immunoway.com.cn>
Address: 2200 Ringwood Ave San Jose, CA 95131 USA



Please scan the QR code to access additional product information:
CAH11 Rabbit pAb