

## KI2L2 Rabbit pAb

CatalogNo: YN0812

### | Key Features

#### Host Species

- Rabbit

#### Reactivity

- Human

#### Applications

- WB,ELISA

#### MW

- 38kD (Observed)

#### Isotype

- IgG

### | Recommended Dilution Ratios

**WB 1:500-2000**

**ELISA 1:5000-20000**

### | Storage

#### Storage\*

-15°C to -25°C/1 year(Do not lower than -25°C)

#### Formulation

Liquid in PBS containing 50% glycerol, 0.5% BSA and 0.02% sodium azide.

### | Basic Information

#### Clonality

Polyclonal

### | Immunogen Information

#### Immunogen

Synthesized peptide derived from part region of human protein

#### Specificity

KI2L2 Polyclonal Antibody detects endogenous levels of protein.

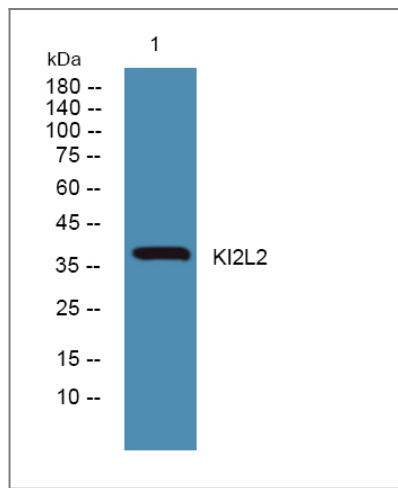
### | Target Information

#### Gene name

KIR2DL2 CD158B1 NKAT6

<b>Protein Name</b>	Killer cell immunoglobulin-like receptor 2DL2 (CD158 antigen-like family member B1) (MHC class I NK cell receptor) (Natural killer-associated transcript 6) (NKAT-6) (p58 natural killer cell receptor clone CL-43) (p58 NK receptor CL-43) (CD antigen CD158b1)		
	<b>Organism</b>	<b>Gene ID</b>	<b>UniProt ID</b>
	Human	<a href="#">3803;</a>	<a href="#">P43627;</a>
<b>Cellular Localization</b>	Cell membrane; Single-pass type I membrane protein.		
<b>Tissue specificity</b>	Natural killer cell		
<b>Function</b>	Function:Receptor on natural killer (NK) cells for HLA-C alleles. Inhibits the activity of NK cells thus preventing cell lysis.,miscellaneous:PubMed:15580659, identified a chromosomal rearrangement producing a recombinant gene composed of the promoter and first exon of KIR2DL5A fused to KIR3DP1 which was originally thought to be a pseudogene. This leads to the expression in 4.5 percent of a Spanish Caucasoid population of an mRNA which may encode a chimeric protein KIR2DL5A/KIR3DP1.,similarity:Belongs to the immunoglobulin superfamily.,similarity:Contains 2 Ig-like C2-type (immunoglobulin-like) domains.,similarity:Contains 3 Ig-like C2-type (immunoglobulin-like) domains.,tissue specificity:Expressed in peripheral blood cells.,		

## Validation Data



Western blot analysis of lysates from DU145 cells, primary antibody was diluted at 1:1000, 4°over night

## Contact information

Orders: [order.cn@immunoway.com](mailto:order.cn@immunoway.com)  
 Support: [support.cn@immunoway.com](mailto:support.cn@immunoway.com)  
 Telephone: 400-8787-807(China)  
 Website: <http://www.immunoway.com.cn>  
 Address: 2200 Ringwood Ave San Jose, CA 95131 USA



Please scan the QR code  
 to access additional  
 product information:  
**KI2L2 Rabbit pAb**

