

STAP2 Rabbit pAb

CatalogNo: YN1719

Key Features

Host Species

- Rabbit

Reactivity

- Human, Mouse

Applications

- WB, ELISA

MW

- 44kD (Observed)

Isotype

- IgG

Recommended Dilution Ratios

WB 1:500-2000

ELISA 1:5000-20000

Storage

Storage*

-15°C to -25°C/1 year (Do not lower than -25°C)

Formulation

Liquid in PBS containing 50% glycerol, 0.5% BSA and 0.02% sodium azide.

Basic Information

Clonality

Polyclonal

Immunogen Information

Immunogen

Synthesized peptide derived from part region of human protein

Specificity

STAP2 Polyclonal Antibody detects endogenous levels of protein.

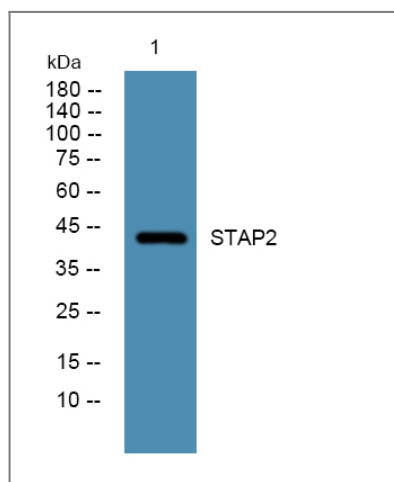
Target Information

Gene name

STAP2 BKS

| | | | |
|------------------------------|--|------------------------|-------------------------|
| Protein Name | Signal-transducing adaptor protein 2 (STAP-2) (Breast tumor kinase substrate) (BRK substrate) | | |
| | Organism | Gene ID | UniProt ID |
| | Human | 55620; | Q9UGK3; |
| | Mouse | | Q8R0L1; |
| Cellular Localization | Cytoplasm . | | |
| Tissue specificity | Widely expressed. | | |
| Function | Function:Substrate of protein kinase PTK6. May play a regulatory role in the acute-phase response in systemic inflammation and may modulate STAT3 activity.,PTM:Phosphorylated on tyrosine. Tyr-250 may be important for interaction with kinases. Tyr-22 and Tyr-322 appears to be phosphorylated by SRC.,sequence Caution:Alu insert from position 358 to 403.,similarity:Contains 1 PH domain.,similarity:Contains 1 SH2 domain.,subunit:Interacts with PTK6 and CSF1R.,tissue specificity:Widely expressed., | | |

Validation Data



Western blot analysis of lysates from SH-SY5Y cells, primary antibody was diluted at 1:1000, 4° over night

Contact information

Orders: order.cn@immunoway.com
 Support: support.cn@immunoway.com
 Telephone: 400-8787-807(China)
 Website: <http://www.immunoway.com.cn>
 Address: 2200 Ringwood Ave San Jose, CA 95131 USA



Please scan the QR code to access additional product information:
STAP2 Rabbit pAb

