

## STX7 Rabbit pAb

CatalogNo: YT7678

### Key Features

#### Host Species

- Rabbit

#### Reactivity

- Human, Mouse, Rat

#### Applications

- WB, IHC

#### MW

- 29kD (Calculated)

#### Isotype

- IgG

### Recommended Dilution Ratios

WB 1:500-2000

IHC 1:50-300

### Storage

#### Storage\*

-15°C to -25°C/1 year (Do not lower than -25°C)

#### Formulation

Liquid in PBS containing 50% glycerol, 0.5% BSA and 0.02% sodium azide.

### Basic Information

#### Clonality

Polyclonal

### Immunogen Information

#### Immunogen

Synthesized peptide derived from human STX7 AA range: 42-92

#### Specificity

This antibody detects endogenous levels of STX7 at Human/Mouse/Rat

### Target Information

#### Gene name

STX7

Protein Name STX7

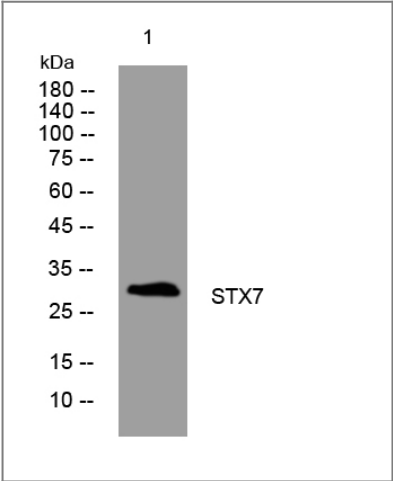
Organism	Gene ID	UniProt ID
Human	<a href="#">8417</a> ;	<a href="#">O15400</a> ;
Mouse		<a href="#">O70439</a> ;
Rat	<a href="#">100910446</a> ;	<a href="#">O70257</a> ;

Cellular Localization Early endosome membrane ; Single-pass type IV membrane protein .

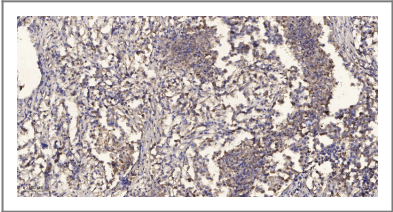
Tissue specificity Highest expression is found in placenta followed by heart, skeletal muscle, kidney and brain. Low expression is found in pancreas, lung and liver.

Function:May be involved in protein trafficking from the plasma membrane to the early endosome (EE) as well as in homotypic fusion of endocytic organelles. Mediates the endocytic trafficking from early endosomes to late endosomes and lysosomes.,similarity:Belongs to the syntaxin family.,similarity:Contains 1 t-SNARE coiled-coil homology domain.,subunit:Forms a SNARE complex with VTI1B, STX8 and VAMP8 which functions in the homotypic fusion of late endosomes. Interacts with VPS33A. Found in a complex with VAMP8 and VTI1B in the liver. Part of the SNARE core complex containing VAMP8, STX8 and VTI1B (By similarity). Interacts with VPS11, VPS16 and VPS18.,tissue specificity:Highest expression is found in placenta followed by heart, skeletal muscle, kidney and brain. Low expression is found in pancreas, lung and liver.,

Validation Data



Western blot analysis of lysates from MCF-7 cells, primary antibody was diluted at 1:1000, 4° over night



Immunohistochemical analysis of paraffin-embedded human Squamous cell carcinoma of lung. 1, Antibody was diluted at 1:200(4° overnight). 2, Tris-EDTA,pH9.0 was used for antigen retrieval. 3,Secondary antibody was diluted at 1:200(room temperature, 45min).

## | Contact information

Orders: order.cn@immunoway.com  
Support: support.cn@immunoway.com  
Telephone: 400-8787-807(China)  
Website: <http://www.immunoway.com.cn>  
Address: 2200 Ringwood Ave San Jose, CA 95131 USA



Please scan the QR code  
to access additional  
product information:  
**STX7 Rabbit pAb**

---

For Research Use Only. Not for Use in Diagnostic Procedures.

[Antibody](#) | [ELISA Kits](#) | [Protein](#) | [Reagents](#)