

## Goat Anti Mouse IgG(H+L) (HRP)

CatalogNo: RS0001

### Key Features

#### Host Species

- Goat

#### Reactivity

- Mouse

#### Applications

- WB,IHC,ELISA

#### Conjugate

- HRP

### Storage

**Storage\*** -15°C to -25°C/1 year(Do not lower than -25°C)

**Formulation** Liquid in PBS containing 50% glycerol, 0.5% BSA and 0.02% sodium azide.

### Recommended Dilution Ratios

**WB 1:5000-20000**

**IHC 1:20-100**

**ELISA 1:5000-20000**

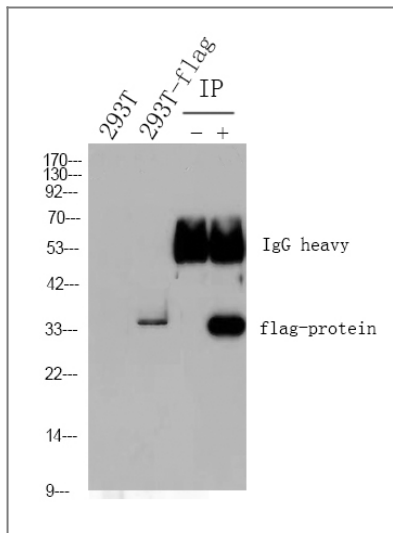
### Basic Information

### Immunogen Information

### Target Information

**Protein Name**

### Validation Data



1) Input: 293T transfected N-flag protein Lysate 2) IP product: IP dilute 1: 200, 293T transfected N-flag protein Lysate Western blot analysis: primary antibody : 1:10000 Secondary antibody: Goat anti-Mouse IgG(RS0001), 1: 5000

## Contact information

Orders: [order.cn@immunoway.com](mailto:order.cn@immunoway.com)  
 Support: [support.cn@immunoway.com](mailto:support.cn@immunoway.com)  
 Telephone: 400-8787-807(China)  
 Website: <http://www.immunoway.com.cn>  
 Address: 2200 Ringwood Ave San Jose, CA 95131 USA



Please scan the QR code to access additional product information:  
**Goat Anti Mouse IgG(H+L) (HRP)**

For Research Use Only. Not for Use in Diagnostic Procedures.

[Antibody](#) | [ELISA Kits](#) | [Protein](#) | [Reagents](#)