



## VEGF-A (PT0865) Mouse mAb

CatalogNo: YM4156 **Recombinant**   
**Orthogonal Validated** 

### Key Features

#### Host Species

- Mouse

#### Reactivity

- Human, Mouse, Rat

#### Applications

- WB, IF, ELISA

#### MW

- 27kD (Calculated)  
37kD (Observed)

#### Isotype

- IgG1, Kappa

### Storage

**Storage\*** -15°C to -25°C/1 year (Do not lower than -25°C)

**Formulation** PBS, 50% glycerol, 0.05% Proclin 300, 0.05% BSA

### Recommended Dilution Ratios

**WB 1:500-2000**

**IF 1:100-500**

**ELISA 1:1000-5000**

### Basic Information

**Clonality** Monoclonal

**Clone Number** PT0865

### Immunogen Information

**Immunogen** The antiserum was produced against synthesized peptide derived from human VEGF-A. AA range: 100-200

**Specificity** This antibody detects endogenous levels of VEGF-A protein.

## Target Information

**Gene name** VEGFA

**Protein Name** Vascular endothelial growth factor A

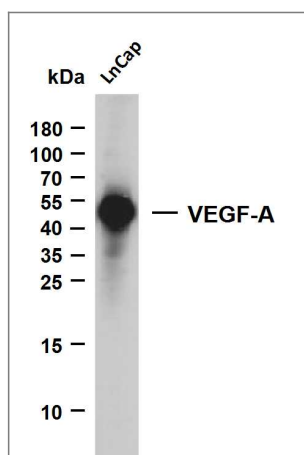
Organism	Gene ID	UniProt ID
Human	<a href="#">7422;</a>	<a href="#">P15692;</a>
Mouse	<a href="#">22339;</a>	<a href="#">Q00731;</a>
Rat	<a href="#">83785;</a>	<a href="#">P16612;</a>

**Cellular Localization** Cytoplasmic

**Tissue specificity** Isoform VEGF189, isoform VEGF165 and isoform VEGF121 are widely expressed. Isoform VEGF206 and isoform VEGF145 are not widely expressed. A higher level expression seen in pituitary tumors as compared to the pituitary gland.

**Function** Function:Growth factor active in angiogenesis, vasculogenesis and endothelial cell growth. Induces endothelial cell proliferation, promotes cell migration, inhibits apoptosis, and induces permeabilization of blood vessels. Binds to the VEGFR1/Flt-1 and VEGFR2/Kdr receptors, heparan sulfate and heparin. Neuropilin-1 binds isoforms VEGF-165 and VEGF-145. Isoform VEGF165B binds to VEGFR2/Kdr but doesn't activate downstream signaling pathways, doesn't activate angiogenesis and inhibits tumor growth.,induction:Regulated by growth factors, cytokines, gonadotropins, nitric oxide, hypoxia, hypoglycemia and oncogenic mutations.,online information:VEGF entry,similarity:Belongs to the PDGF/VEGF growth factor family.,subcellular location:VEGF121 is acidic and freely secreted. VEGF165 is more basic, has heparin-binding properties and, although a significant proportion remains cell-associated, most is freely secreted. VEGF189 is very basic, it is cell-associated after secretion and is bound avidly by heparin and the extracellular matrix, although it may be released as a soluble form by heparin, heparinase or plasmin.,subunit:Homodimer; disulfide-linked. Also found as heterodimer with PlGF.,tissue specificity:The VEGF189, VEGF-165 and VEGF-121 isoforms are widely expressed, whereas the VEGF206 and VEGF-145 are uncommon.,

## Validation Data



Whole cell lysates were separated by 10% SDS-PAGE, and the membrane was blotted with anti-VEGF-A (PT2198) antibody. The HRP-conjugated Goat anti-Mouse IgG (H + L) antibody was used to detect the antibody. Lane 1: LnCap Predicted band size: 27kDa Observed band size: 42kDa

## | Contact information

Orders: order.cn@immunoway.com  
Support: support.cn@immunoway.com  
Telephone: 400-8787-807(China)  
Website: <http://www.immunoway.com.cn>  
Address: 2200 Ringwood Ave San Jose, CA 95131 USA



Please scan the QR code  
to access additional  
product information:  
**VEGF-A (PT0865)**  
**Mouse mAb**

---

For Research Use Only. Not for Use in Diagnostic Procedures.

[Antibody](#) | [ELISA Kits](#) | [Protein](#) | [Reagents](#)