

## GAPDH (PT0004R) Rabbit mAb

CatalogNo: YM8016 **Recombinant** 

### Key Features

#### Host Species

- Rabbit

#### Reactivity

- Human, Mouse, Rat, Rabbit, Dog, Monkey

#### Applications

- WB, ELISA

#### MW

- 37kD (Calculated)
- 37kD (Observed)

#### Isotype

- IgG, Kappa

### Storage

**Storage\*** -15°C to -25°C/1 year (Do not lower than -25°C)

**Formulation** PBS, 50% glycerol, 0.05% Proclin 300, 0.05% BSA

### Recommended Dilution Ratios

WB 1:500-2000

ELISA 1:20000

### Basic Information

**Clonality** Monoclonal

**Clone Number** PT0004R

### Immunogen Information

**Immunogen** Synthesized peptide derived from human protein. AA range:200-300

**Specificity** Endogenous

## Target Information

**Gene name** GAPDH

**Protein Name** Glyceraldehyde-3-phosphate dehydrogenase

Organism	Gene ID	UniProt ID
Human	<a href="#">2597</a> ;	<a href="#">P04406</a> ;
Mouse	<a href="#">100042025</a> ;	<a href="#">P16858</a> ;
Rat	<a href="#">24383</a> ;	<a href="#">P04797</a> ;

**Cellular Localization**

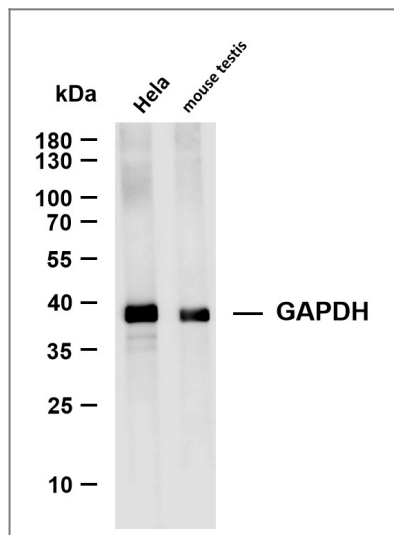
Cytoplasm, cytosol . Nucleus . Cytoplasm, perinuclear region . Membrane . Cytoplasm, cytoskeleton . Translocates to the nucleus following S-nitrosylation and interaction with SIAH1, which contains a nuclear localization signal (By similarity). Postnuclear and Perinuclear regions (PubMed:12829261). .

**Tissue specificity** Astrocytoma,Brain,Cajal-Retzius cell,Colon adenocarcinoma,Epitheliu

**Function**

Catalytic activity:D-glyceraldehyde 3-phosphate + phosphate + NAD(+) = 3-phospho-D-glyceroyl phosphate + NADH.,Function:Independent of its glycolytic activity it is also involved in membrane trafficking in the early secretory pathway.,online information:Glyceraldehyde 3-phosphate dehydrogenase entry,pathway:Carbohydrate degradation; glycolysis; pyruvate from D-glyceraldehyde 3-phosphate: step 1.,pathway:Carbohydrate degradation; glycolysis; pyruvate from D-glyceraldehyde 3-phosphate: step 1/5.,PTM:Reversible S-nitrosylation of Cys-152 inhibits enzymatic activity and increases endogenous ADP-ribosylation, which inhibits the enzyme in a non-reversible manner. The latter modification is more likely to be a pathophysiological event associated with inhibition of gluconeogenesis.,sequence Caution:Differs quite extensively.,similarity:Belongs to the glyceraldehyde-3-phosphate dehydrogenase family.,subcellular location:Postnuclear and Perinuclear regions.,subunit:Homotetramer.,subunit:Homotetramer. Binds PRKCI.,

## Validation Data



Various whole cell lysates were separated by 4-20% SDS-PAGE, and the membrane was blotted with anti-GAPDH antibody. The HRP-conjugated Goat anti-Rabbit IgG(H + L) antibody was used to detect the antibody. Lane 1:PT0004R Lane 2: mouse testis Predicted band size: 37kDa Observed band size: 37kDa

## | Contact information

Orders: order.cn@immunoway.com  
Support: support.cn@immunoway.com  
Telephone: 400-8787-807(China)  
Website: <http://www.immunoway.com.cn>  
Address: 2200 Ringwood Ave San Jose, CA 95131 USA



Please scan the QR code  
to access additional  
product information:  
**GAPDH (PT0004R)**  
**Rabbit mAb**

---

For Research Use Only. Not for Use in Diagnostic Procedures.

[Antibody](#) | [ELISA Kits](#) | [Protein](#) | [Reagents](#)