

## SDHA (PT0711R) PT™ Rabbit mAb

CatalogNo: YM8568 **Recombinant** 

**★IHC**

### Key Features

#### Host Species

- Rabbit

#### Reactivity

- Human, Mouse, Rat

#### Applications

- WB, IHC, IF, ELISA

#### MW

- 73kD (Calculated)  
73kD (Observed)

#### Isotype

- IgG, Kappa

### Storage

**Storage\*** -15°C to -25°C/1 year (Do not lower than -25°C)

**Formulation** PBS, 50% glycerol, 0.05% Proclin 300, 0.05% BSA

### Recommended Dilution Ratios

**IHC 1:200-1000**

**WB 1:1000-5000**

**IF 1:200-1000**

**ELISA 1:5000-20000**

### Basic Information

**Clonality** Monoclonal

**Clone Number** PT0711R

### Immunogen Information

**Immunogen** The specific immunogen used to produce this antibody is proprietary information.

**Specificity** Endogenous

---

## | Target Information

**Gene name** SDHA

**Protein Name** Succinate dehydrogenase [ubiquinone] flavoprotein subunit mitochondrial

Organism	Gene ID	UniProt ID
Human	<a href="#">6389;</a>	<a href="#">P31040;</a>
Mouse	<a href="#">66945;</a>	<a href="#">Q8K2B3;</a>
Rat	<a href="#">157074;</a>	<a href="#">Q920L2;</a>

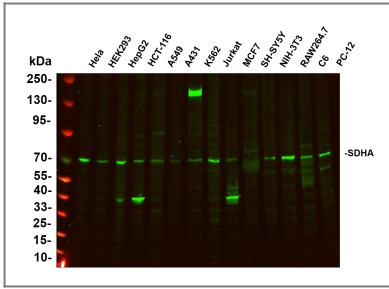
**Cellular Localization** Cytoplasmic

**Tissue specificity** Adipocyte ,Brain ,Colon ,Heart ,Liver ,Placenta ,

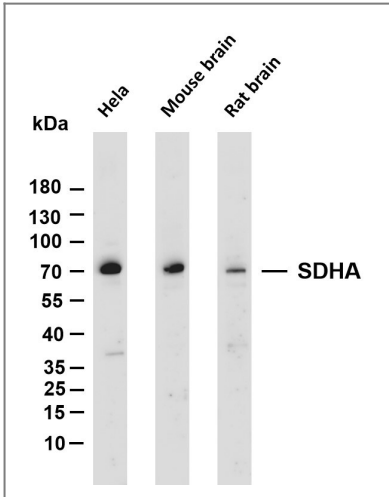
**Function** Catalytic activity:Succinate + ubiquinone = fumarate + ubiquinol. ,cofactor:FAD. ,Disease:Defects in SDHA are a cause of complex II mitochondrial respiratory chain deficiency [MIM:252011]; also known as succinate CoQ reductase deficiency. Defects of oxidative phosphorylation give rise to heterogeneous clinical symptoms ranging from isolated organ dysfunction to multisystem disorder. A deficiency of complex II represents a rare cause of mitochondrial encephalomyopathy , leukodystrophy , late-onset optic atrophy and ataxia , myopathy with exercise intolerance , and isolated cardiomyopathy. ,Disease:Defects in SDHA are a cause of Leigh syndrome (LS) [MIM:256000]. LS is a severe disorder characterized by bilaterally symmetrical necrotic lesions in subcortical brain regions. ,Function:Flavoprotein (FP) subunit of succinate dehydrogenase (SDH) that is involved in complex II of the mitochondrial electron transport chain and is responsible for transferring electrons from succinate to ubiquinone (coenzyme Q) . ,miscellaneous:The complex , present in mitochondria , can be degraded to form EC 1.3.99.1 , which no longer reacts with ubiquinone. ,pathway:Carbohydrate metabolism; tricarboxylic acid cycle. ,sequence Caution:Differs extensively from that shown. ,similarity:Belongs to the FAD-dependent oxidoreductase 2 family. FRD/SDH subfamily. ,subunit:Component of complex II composed of four subunits: the flavoprotein (FP) sdha , iron-sulfur protein (IP) sdhb , and a cytochrome b560 composed of sdhc and sdhd. ,

---

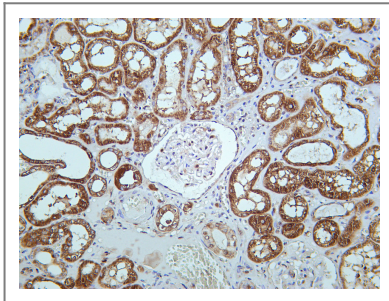
## | Validation Data



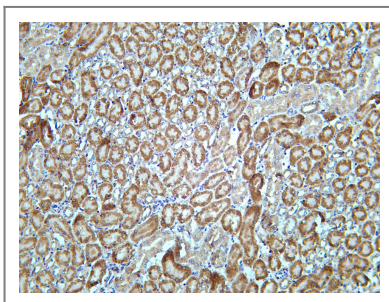
Various whole cell lysates were separated by 4-20% SDS-PAGE, and the primary antibody was used at 4°C over night with a 1:2500 dilution . The Dylight 800-conjugated Goat anti-Rabbit antibody (Cat:RS23920) was used to detect the antibody. Lane1: HeLa - Human cervical cancer Lane2: HEK293 - Human normal embryonic kidney Lane3: HepG2 - Human hepatocellular carcinoma Lane4: HCT-116 - Human colon cancer Lane5: A549 - Human lung adenocarcinoma Lane6: A431 - Human skin squamous cell carcinoma Lane7: K562 - Human chronic myeloid leukemia Lane8: Jurkat - Human acute T cell leukemia cells Lane9: MCF7 - Human breast cancer Lane10: SH-SY5Y - Human neuroblastoma cells Lane11: NIH-3T3 - NIH mouse fibroblasts Lane12: RAW264.7 - Mouse mononuclear macrophage leukemia cells Lane13: C6 - Rat glioma cells Lane14: PC-12 - Pheochromocytoma in rats Predicted band size: 73kDa Observed band size: 73kDa



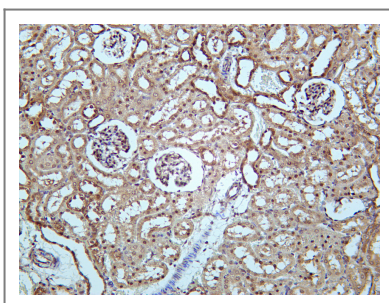
Various whole cell lysates were separated by 4-20% SDS-PAGE, and the membrane was blotted with anti-SDHA antibody. The HRP-conjugated Goat anti-Rabbit IgG (H + L) antibody was used to detect the antibody. Lane 1: HeLa Lane 2: Mouse brain Lane 3: Rat brain Predicted band size: 73kDa Observed band size: 73kDa



Human kidney was stained with Anti-SDHA rabbit antibody



Mouse kidney was stained with Anti-SDHA rabbit antibody



Rat kidney was stained with Anti-SDHA rabbit antibody

## | Contact information

Orders: order.cn@immunoway.com  
Support: support.cn@immunoway.com  
Telephone: 400-8787-807(China)  
Website: <http://www.immunoway.com.cn>  
Address: 2200 Ringwood Ave San Jose, CA 95131 USA



Please scan the QR code  
to access additional  
product information:  
**SDHA (PT0711R)**  
**PT™ Rabbit mAb**

---

For Research Use Only. Not for Use in Diagnostic Procedures.

[Antibody](#) | [ELISA Kits](#) | [Protein](#) | [Reagents](#)