

## STAP2 Rabbit pAb

CatalogNo: YN1719

### Key Features

**Host Species**

- Rabbit

**Reactivity**

- Human, Mouse

**Applications**

- WB, ELISA

**MW**

- 44kD (Observed)

**Isotype**

- IgG

### Storage

**Storage\***

-15°C to -25°C/1 year (Do not lower than -25°C)

**Formulation**

Liquid in PBS containing 50% glycerol, 0.5% BSA and 0.02% sodium azide.

### Recommended Dilution Ratios

**WB 1:500-2000****ELISA 1:5000-20000**

### Basic Information

**Clonality**

Polyclonal

### Immunogen Information

**Immunogen**

Synthesized peptide derived from part region of human protein

**Specificity**

STAP2 Polyclonal Antibody detects endogenous levels of protein.

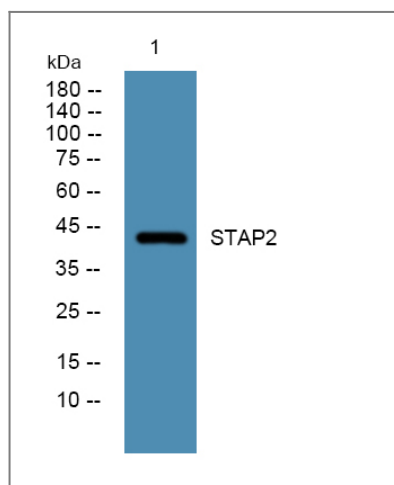
### Target Information

**Gene name**

STAP2 BKS

<b>Protein Name</b>	Signal-transducing adaptor protein 2 (STAP-2) (Breast tumor kinase substrate) (BRK substrate)		
	<b>Organism</b>	<b>Gene ID</b>	<b>UniProt ID</b>
	Human	<a href="#">55620;</a>	<a href="#">Q9UGK3;</a>
	Mouse		<a href="#">Q8R0L1;</a>
<b>Cellular Localization</b>	Cytoplasm .		
<b>Tissue specificity</b>	Widely expressed.		
<b>Function</b>	Function:Substrate of protein kinase PTK6. May play a regulatory role in the acute-phase response in systemic inflammation and may modulate STAT3 activity.,PTM:Phosphorylated on tyrosine. Tyr-250 may be important for interaction with kinases. Tyr-22 and Tyr-322 appears to be phosphorylated by SRC.,sequence Caution:Alu insert from position 358 to 403.,similarity:Contains 1 PH domain.,similarity:Contains 1 SH2 domain.,subunit:Interacts with PTK6 and CSF1R.,tissue specificity:Widely expressed.,		

## Validation Data



Western blot analysis of lysates from SH-SY5Y cells, primary antibody was diluted at 1:1000, 4° over night

## Contact information

Orders: [order.cn@immunoway.com](mailto:order.cn@immunoway.com)  
 Support: [support.cn@immunoway.com](mailto:support.cn@immunoway.com)  
 Telephone: 400-8787-807(China)  
 Website: <http://www.immunoway.com.cn>  
 Address: 2200 Ringwood Ave San Jose, CA 95131 USA



Please scan the QR code to access additional product information:  
**STAP2 Rabbit pAb**

